

Stribling Road Improvements

Madison County, Mississippi



PROJECT MANAGER

Shannon Wells, PE, PS

1076 Highland Colony Parkway
Suite 325

Ridgeland, MS 39157

601-941-3252

MSWells@GarverUSA.com

Madison County

Project Description

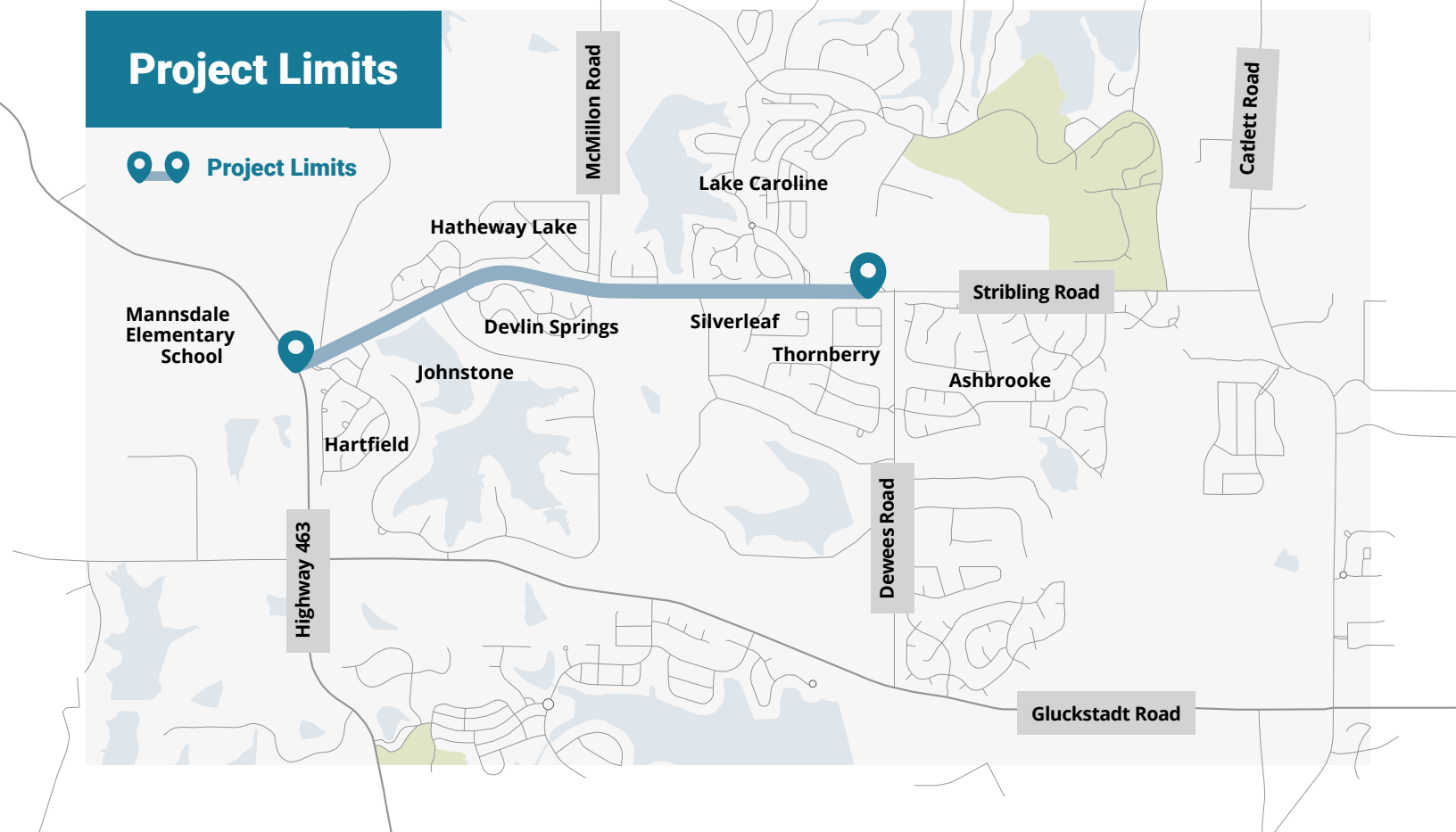
Stribling Road Improvements from
Highway 463 to Dewees Road

Project Limits

Project Limits



Project Location



Stribling Road Improvements

January 20, 2026 Update



Progress to Date

■ Environmental

- USACE requested additional info. in Dec.; Garver provided info. +/-2 weeks later; approval/comment(s) pending

■ Roadway

- Preliminary design (ROW) drawings are +/- 95% complete; includes roundabout at Camden Crossing per S.A. #1

■ Right-of-Way Acquisition

- Began title work on affected parcels per S.A. #1
- Began office work pertaining to legal descriptions/survey plats

■ Public Involvement

- Met with MDOT in November regarding an additional connection to Hwy 463 for Hartfield
- Met with MDOT in December to coordinate Stribling Road project with Hwy 463 intersection improvement project

Stribling Road (Highway 463 to Dewees Road)

Contract Value: \$803,000.00

S.A. #1: \$679,343.45

Revised Contract Value: \$1,482,343.45

Contract NTP: November 4, 2024

Amount Invoiced to Date: \$818,834.27

Anticipated 3-Month Projection of Work

■ Environmental

- Receive Nationwide permit from USACE for wetlands impacts

■ Roadway

- Finalize preliminary design (ROW) drawings – pending agreement with Hartfield HOA
- Provide a preliminary design level cost estimate
- Begin development of final design (Construction) drawings

■ Utilities

- Distribute preliminary design (ROW) drawings to utility companies to begin relocation process
- Coordination with utility companies as required
- Continued coordination with Delta Utilities regarding gas pipeline crossing

■ Right-of-Way Acquisition

- Complete title work
- Begin appraisal process for affected parcels upon completion of legal descriptions

■ Survey

- Begin boundary survey work, legal descriptions, and survey plats for affected parcels
- Obtain additional topographic survey for Hartfield entrance relocation improvements – pending agreement with Hartfield HOA

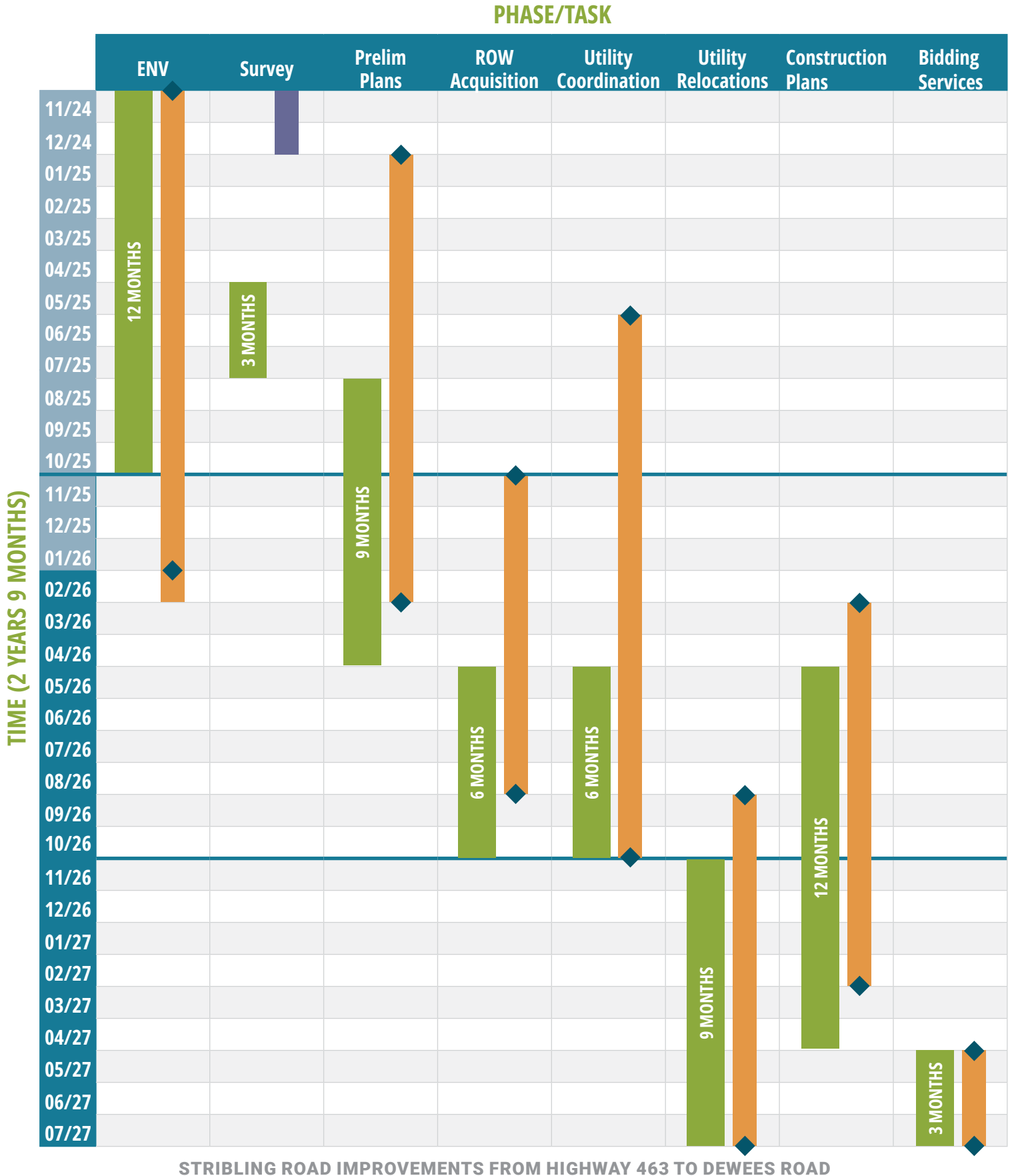
■ Public Involvement

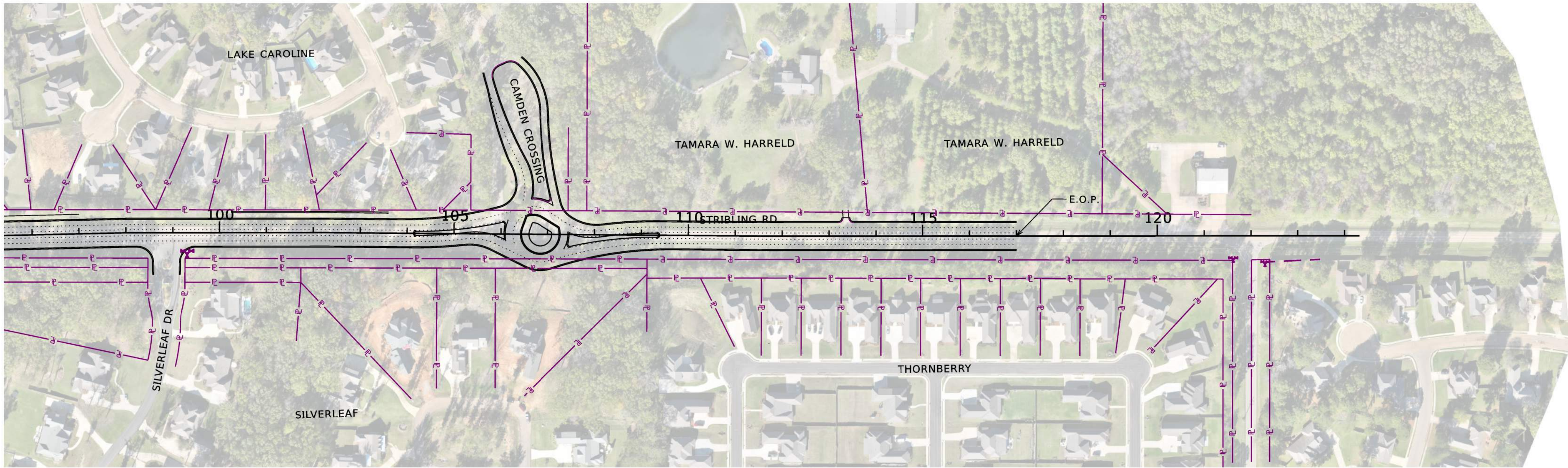
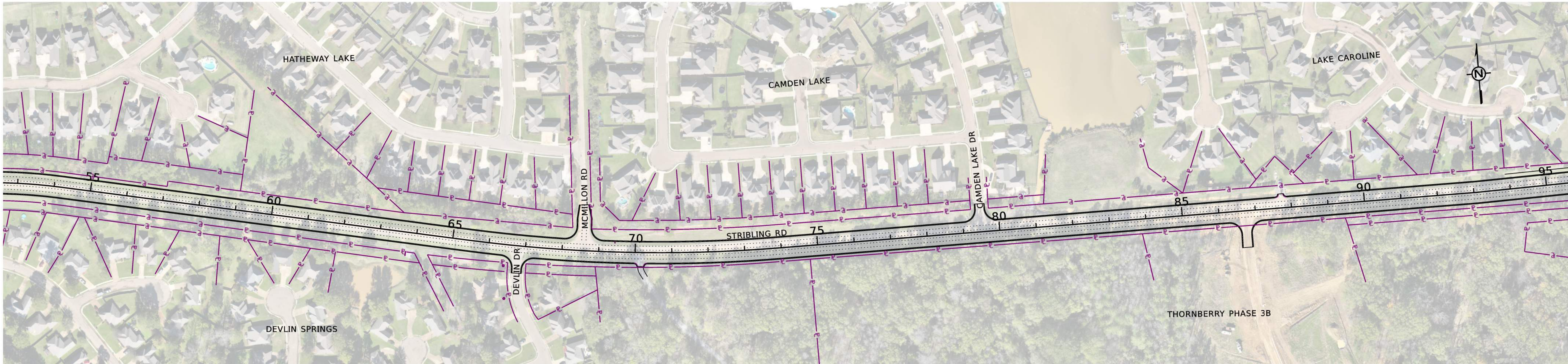
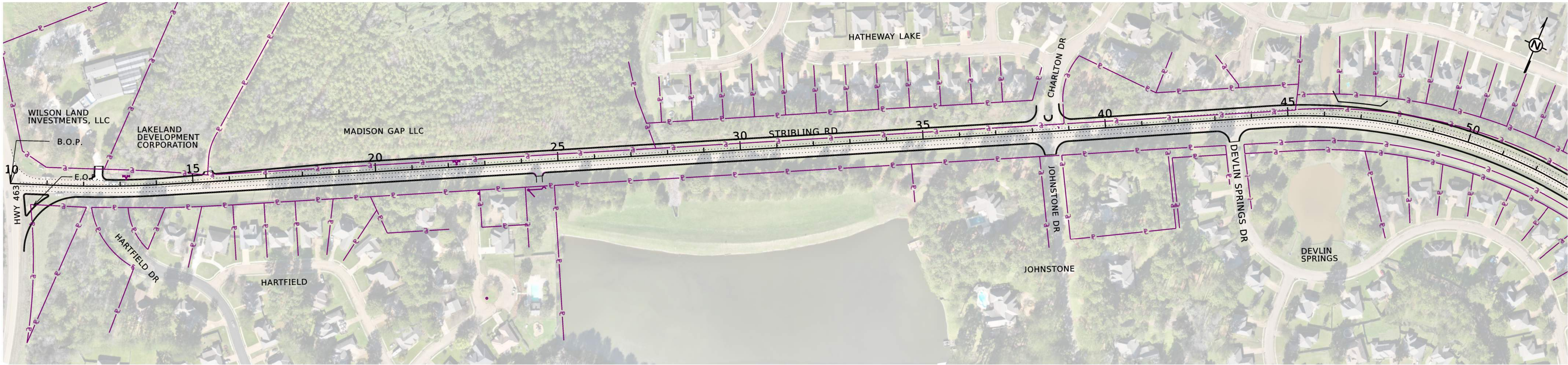
- Meet with Hartfield to discuss latest options for relocated entrance
- Distribute preliminary design (ROW) drawings to MDOT and continue coordination between projects

Project Design Schedule

Legend

- Original Preliminary Schedule
- Updated Schedule (January 20, 2026)
- Substantially Complete
- October 20, 2025 Update





© 2025 GARVER, LLC
THIS DOCUMENT, ALONG WITH THE
IDEAS AND DESIGNS CONVEYED
HEREIN, SHALL BE CONSIDERED
INSTRUMENTS OF PROFESSIONAL
SERVICE AND ARE PROPERTY OF
GARVER, LLC. ANY USE,
REPRODUCTION, OR DISTRIBUTION
OF THIS DOCUMENT, ALONG WITH
THE IDEAS AND DESIGN CONTAINED
HEREIN, IS PROHIBITED UNLESS
AUTHORIZED IN WRITING BY
GARVER, LLC OR EXPLICITLY
ALLOWED IN THE GOVERNING
PROFESSIONAL SERVICES
AGREEMENT FOR THIS WORK.

| REV. | DATE | DESCRIPTION | BY |
|------|------|-------------|----|
| | | | |
| | | | |
| | | | |



MADISON COUNTY
BOARD OF
SUPERVISORS

STRIBLING ROAD
WIDENING -
HWY 463 TO DEWEES RD

SHEET INDEX

PROJECT
LAYOUT

JOB NO.:

DATE:

DESIGNED BY:

DRAWN BY:

BAR IS ONE INCH ON
ORIGINAL DRAWING
0" 1"
IF NOT ONE INCH ON THIS SHEET,
ADJUST SCALES ACCORDINGLY.

DRAWING NUMBER
PL - 1

SHEET
NUMBER **1**